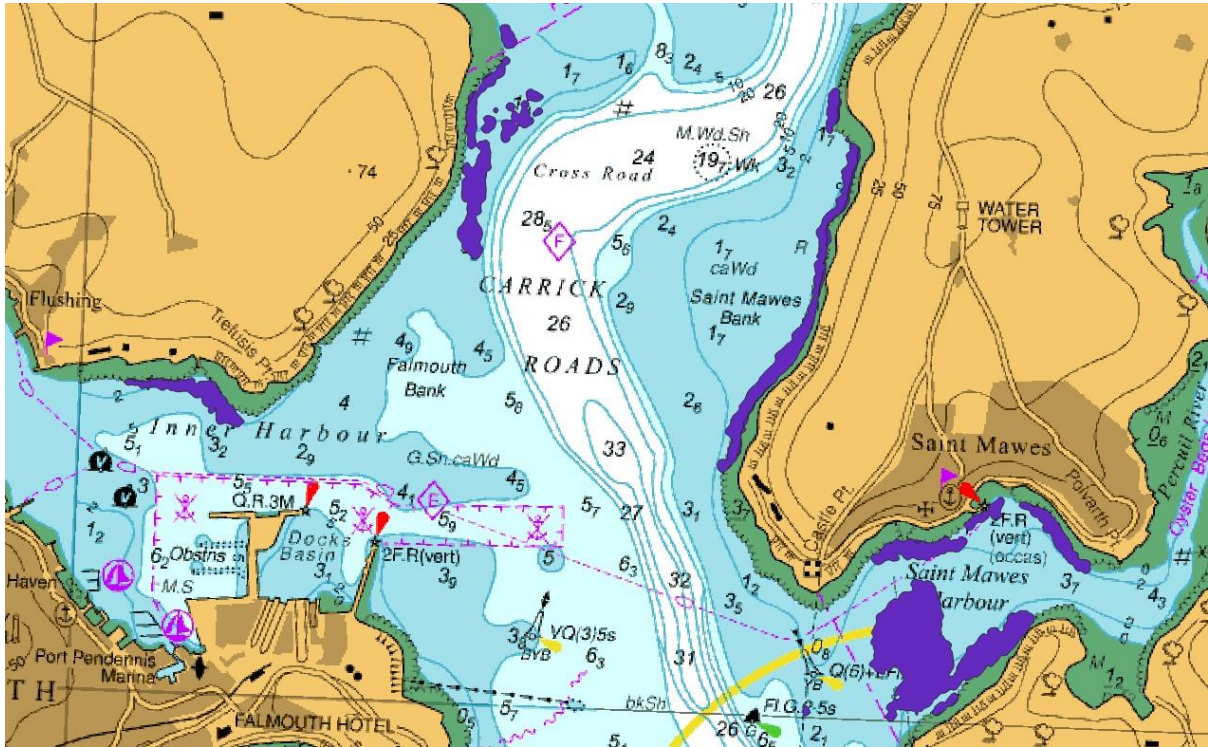
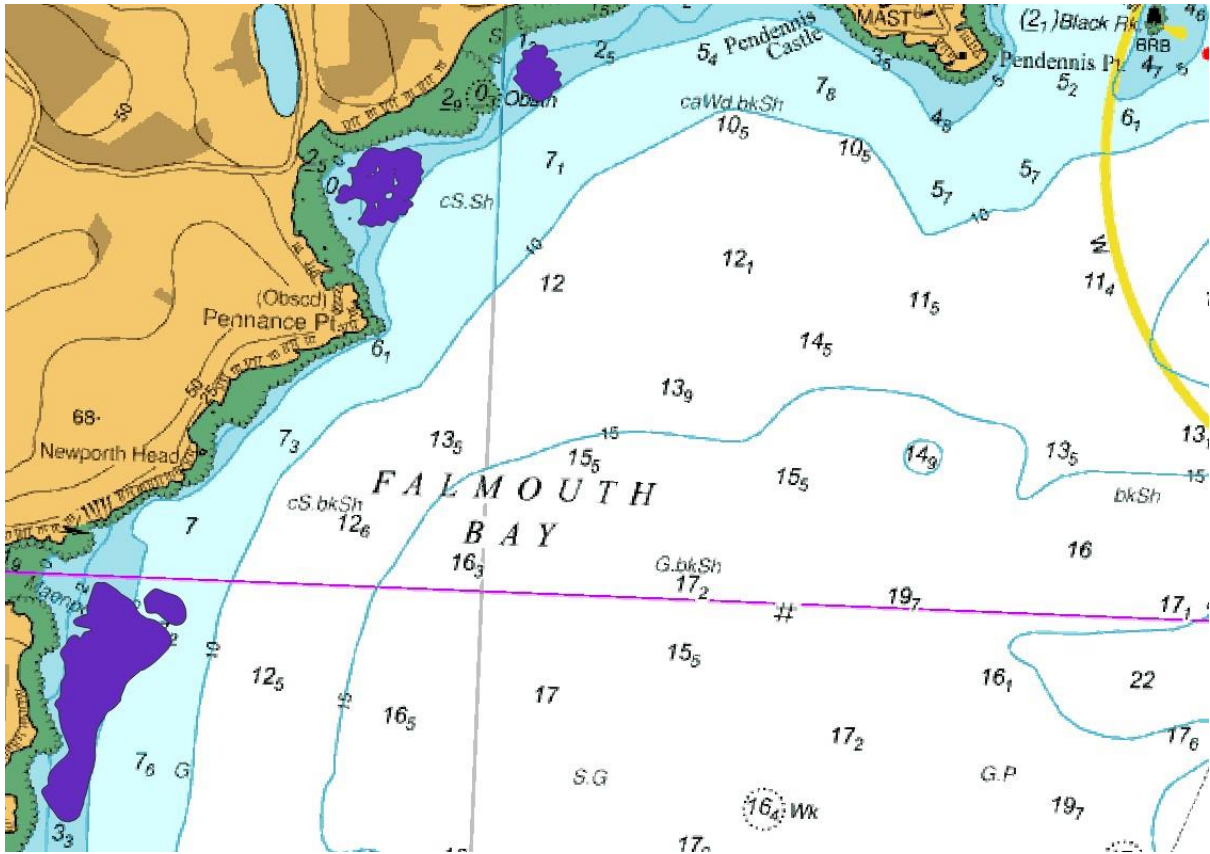


## Seagrass extent

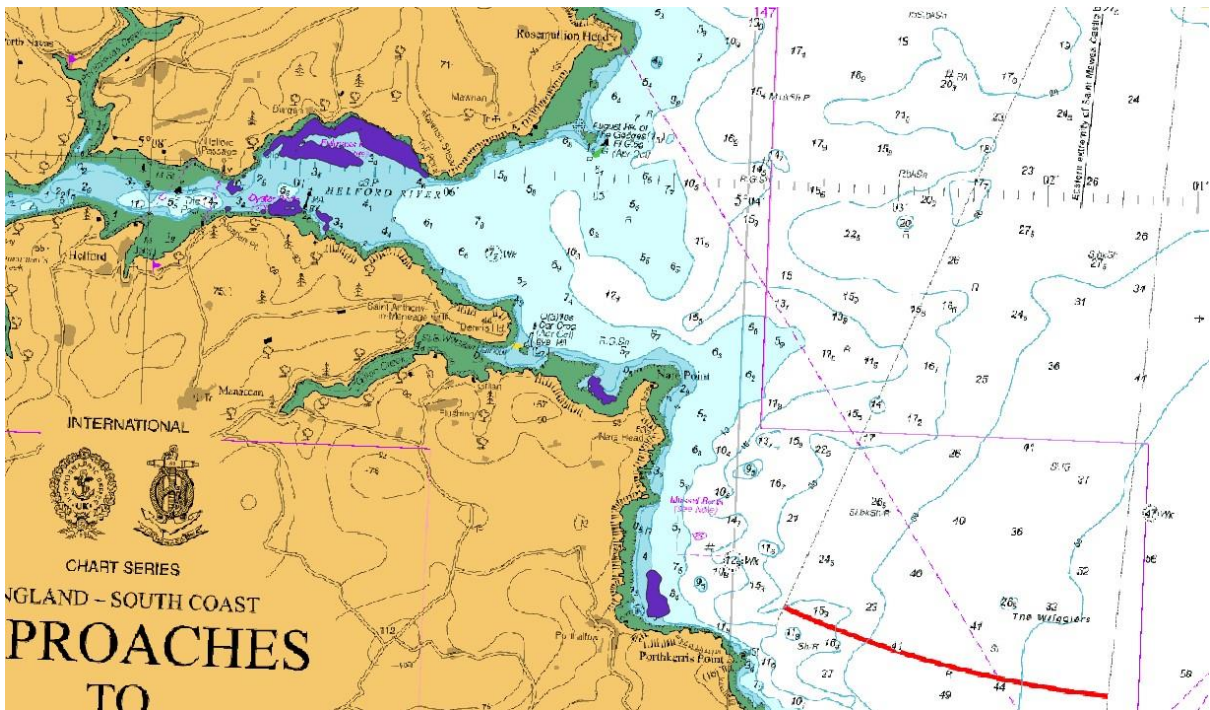
Please try not to anchor in areas of seagrass. If you would like to discuss alternatives and solutions to anchoring in these areas we would very much like to discuss these with you. Please contact us on [info@falmouthharbour.co.uk](mailto:info@falmouthharbour.co.uk) or 01326 213537.



Falmouth & St Mawes Seagrass extent (seagrass shown in purple). (Copyright UKHO Not for navigation)



Falmouth Beaches Seagrass extent (seagrass shown in purple). (Copyright UKHO Not for navigation)



Helford Seagrass extent (seagrass shown in purple). (Copyright UKHO Not for navigation)