



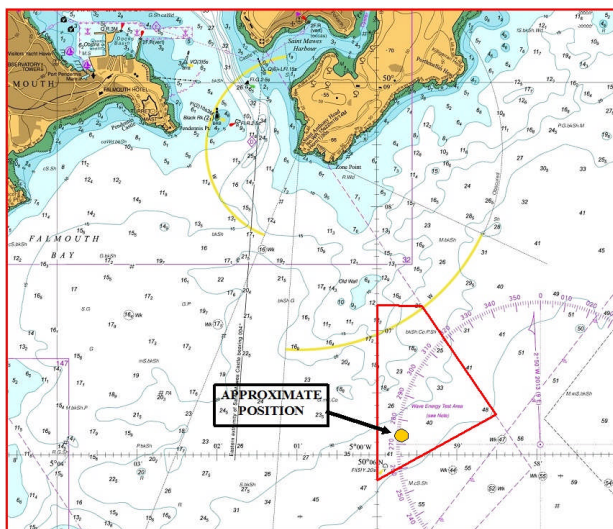
Falmouth Harbour
Commissioners

PORT NOTICE TO MARINERS

NO. 9 of 2016

NOTICE IS HEREBY GIVEN that the four Cardinal marks that were referred to in port notice 32 of 2015, located at the FAB Test site have been removed.

North Cardinal	50° 06'.109 N	004° 59'.660 W
East Cardinal	50° 06'.034 N	004° 59'.537 W
South Cardinal	50° 05'.971 N	004° 59'.630 W
West Cardinal	50° 06'.046 N	004° 59'.753 W



(© UKHO Not for navigation)

Port notice 32 of 2015 is therefore cancelled.

**HARBOUR OFFICE
FALMOUTH
TR11 3JQ**

**M J SANSOM
HARBOUR MASTER
17th March 2016**