



Falmouth Harbour
Commissioners

PORT NOTICE TO MARINERS

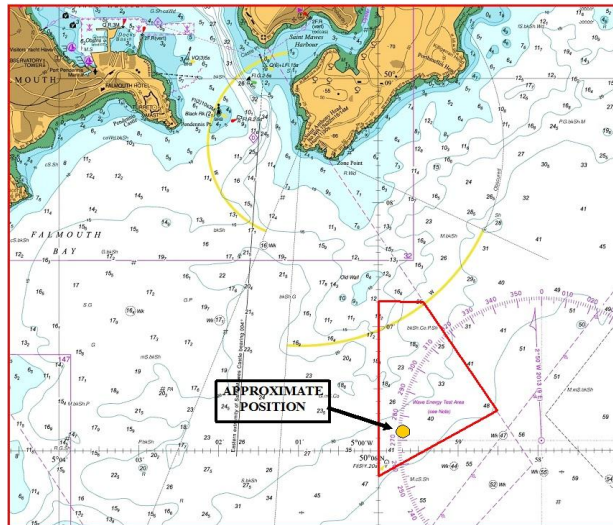
NO. 32 OF 2015

Fab Test site Cardinal Marks

NOTICE IS HEREBY GIVEN that the Cardinal marks located at the FAB Test site have been affected by recent weather as follows.

North Cardinal	50 ⁰ 06'.109 N	004 ⁰ 59'.660 W	Unlit and partially submerged
East Cardinal	50 ⁰ 06'.034 N	004 ⁰ 59'.537 W	Partially submerged
South Cardinal	50 ⁰ 05'.971 N	004 ⁰ 59'.630 W	Unaffected
West Cardinal	50 ⁰ 06'.046 N	004 ⁰ 59'.753 W	Slightly low correct aspect

The moorings and support buoys remain in position mariners are advised to keep clear and navigate with caution.



All Mariners are advised to keep clear and to avoid mooring to the support or navigation buoys.

This notice will be cancelled on repair of the buoys

**HARBOUR OFFICE
FALMOUTH
TR11 3JQ**

**M J SANSOM
HARBOUR MASTER
10 September 2015**